

| | | |
|--|-----------------------------------|----------------------|
| Document Name: Empowering Network Management v2.6 Product External Spec. | Doc No. : PES-03142006 | Version: 1.18 |
| | Effective Date: 2007/08/30 | Page: 1 of 49 |

Empowering Network Management

Product External Specification

| | | |
|---|----------------------------|---------------|
| Document Name: Empowering Network Management v2.6 Product External Spec. | Doc No. : PES-03142006 | Version: 1.18 |
| | Effective Date: 2007/08/30 | Page: 2 of 49 |

Table of Contents

| | |
|---|-------------|
| Document Revision History..... | 4 |
| Introduction..... | 6 |
| Environment..... | 7 |
| Limitation | 7 |
| Support Languages | 7 |
| Code Name of <i>eNet Management</i> v2.6 for Vista | 8 |
| Variation between <i>eNet Management</i> Titan (v2.5 for XP)..... | 8 |
| Competitors..... | 錯誤! 尚未定義書籤。 |
| Install <i>eNet Management</i> | 錯誤! 尚未定義書籤。 |
| Starting <i>eNet Management</i> | 9 |
| System Architecture | 10 |
| Profile Structure | 11 |
| Functional Spec..... | 13 |
| Profile Management | 13 |
| Profile Switching | 16 |
| Wireless Management..... | 18 |
| Wireless Association | 18 |
| System Tray | 19 |
| Troubleshooting..... | 21 |
| Others..... | 21 |
| Multi-User Condition | 23 |
| System Hibernation | 23 |
| User Interface and Experience | 24 |
| Relationships between <i>eNet Management</i> and 3G wireless network utility..... | 24 |
| Detecting the status of <i>eNet Service</i> | 24 |
| Main UI Window..... | 26 |
| Profile Manager..... | 28 |
| Create Profile..... | 29 |
| Edit Profile | 36 |
| Delete Profile..... | 37 |
| Export Profile | 37 |
| Import Profile | 37 |

| | | |
|--|-----------------------------------|----------------------|
| Document Name: Empowering Network Management v2.6 Product External Spec. | Doc No. : PES-03142006 | Version: 1.18 |
| | Effective Date: 2007/08/30 | Page: 3 of 49 |

| | |
|---|----|
| Profile Manual Switching | 38 |
| Profile Auto Switching | 39 |
| Wireless Auto Association | 40 |
| Associate to Wireless Networks Manually | 41 |
| Configure Wireless | 41 |
| Network Advisor | 42 |
| System Tray | 44 |
| Setting | 45 |
| Network Information | 47 |
| VPN | 47 |
| Aspire UI..... | 49 |

| | | |
|---|----------------------------|---------------|
| Document Name: Empowering Network Management v2.6 Product External Spec. | Doc No. : PES-03142006 | Version: 1.18 |
| | Effective Date: 2007/08/30 | Page: 4 of 49 |

Document Revision History

| Version | Author | Release Date | Comment |
|---------|------------|--------------|--|
| V1.0 | Kevin Tsao | 03/14/2006 | |
| V1.01 | Kevin Tsao | 04/06/2006 | Refine the flow and photo |
| V1.02 | Kevin Tsao | 04/14/2006 | Refine the flow and photo |
| V1.03 | Jerry Lee | 07/03/2006 | Remove 3G |
| V1.04 | Kevin Tsao | 07/11/2006 | Add the flow for detecting eNet service |
| V1.05 | Kevin Tsao | 07/19/2006 | Add specific description for applying shared folder, printer and launch program settings and showing the tip |
| V1.06 | Kevin Tsao | 09/07/2006 | Modify the scenario for sharing shared folder |
| V1.07 | Kevin Tsao | 09/18/2006 | Modify the algorithm for searching profile for LAN connection |
| V1.08 | Kevin Tsao | 10/03/2006 | Modify the terms for creating PPPoE/VPN connection |
| V1.09 | Kevin Tsao | 10/04/2006 | <ol style="list-style-type: none"> 1. Add the description for showing available access points in list. 2. Add the photo and description for VPN 3. Add the description for the behavior that user creates wireless connection via Windows Vista's WAN program |
| V1.10 | Kevin Tsao | 11/07/2006 | 1. Remove the message box, "Allow eNet connect to an open access point...". |
| V1.11 | Kevin Tsao | 11/30/2006 | 1. Modify the rule for detecting 3G utility |
| V1.13 | Kevin Tsao | 12/16/2006 | Add the description for detecting Ad Hoc network |

| | | |
|--|-----------------------------------|----------------------|
| Document Name: Empowering Network Management v2.6 Product External Spec. | Doc No. : PES-03142006 | Version: 1.18 |
| | Effective Date: 2007/08/30 | Page: 5 of 49 |

| | | | |
|-------|------------|------------|--|
| V1.14 | Kevin Tsao | 02/07/2007 | Change the default value of Firewall setting in profile to Enabled |
| V1.15 | Kevin Tsao | 03/07/2007 | Add Aspire UI |
| V1.16 | Kevin Tsao | 05/10/2007 | 1. Support additional 9 languages 2. Change spec for domain user |
| V1.17 | Kevin Tsao | 06/12/2007 | 1. Support multi-user condition 2. Added a parameter passed to installer to determine if 3G software detection will be enabled or not |
| V1.18 | Kevin Tsao | 08/30/2007 | 1. Remove the function for detecting 3G software 2. Remove the Install eNet Management section |

| | | |
|---|----------------------------|---------------|
| Document Name: Empowering Network Management v2.6 Product External Spec. | Doc No. : PES-03142006 | Version: 1.18 |
| | Effective Date: 2007/08/30 | Page: 6 of 49 |

Introduction

Empowering Network Management (eNet Management) is a network connectivity assistant utility that helps Acer notebook users configuring and switching their network connection settings easily. Modern notebook users move across different locations. Getting connected in different locations is more and more important and configuring network settings has become a serious problem. With *Empowering Technology*, *eNet Management* provides a connectivity solution not only for wired network but wireless network taking care of all those troublesome business.

eNet Management can help users in following ways:

I Profile Management

User can manage connection settings and location-based settings by profile. The connection settings include LAN & WLAN) and the location-based settings include WLAN settings, TCP/IP settings, PPPoE settings, Internet settings, shared folder, launch program and default printer. User can create, delete, edit, rename, import and export profiles. *eNet Management* takes per-user based profile management. Each user on a computer has his/her profiles to keep privacy from each other.

I Location Identification and Profile Auto-switching

Due to the function of location identification, *eNet Management* can search a matched profile for the target location and switch the profile. With this feature, user no longer worries about those bothering networking settings and location based configurations between different locations. Location identification for LAN and WLAN is based on the MAC address of gateway and the network name of access point (SSID), respectively. If both LAN connection and WLAN connection are available, the criterion for *eNet Management* identifies location is based on the WLAN connection.

I 802.11 Wireless Network (WLAN) Management and Wireless Auto-association

User can manage the 802.11 wireless networks by *eNet Management*. *eNet Management* will leverage on Vista for managing WLAN. On the other hand, user also can set the preferred 802.11 wireless networks in a profile. Once this profile is switched, *eNet Management* will create

| | | |
|---|----------------------------|---------------|
| Document Name: Empowering Network Management v2.6 Product External Spec. | Doc No. : PES-03142006 | Version: 1.18 |
| | Effective Date: 2007/08/30 | Page: 7 of 49 |

WLAN connection automatically by the preferred list. If the WLAN connection is disconnected, *eNet Management* will try to find another available 802.11 wireless network and re-create the WLAN connection automatically (depends on the *eNet Management* settings). The selected access point for creating WLAN connection automatically is based the signal strength and the band of access point.

I Network Advisor

Once the network disconnected, ex. LAN, WLAN or WWAN, *eNet Management* can diagnose the problem for each connection and friendly guide users to solve connectivity problems. *eNet Management* also provides three diagnostic tools for network diagnosis, including IP configuration, Trace routing table and Ping remote host.

Environment

Computer: Acer Notebooks

Operating System: Microsoft Windows Vista 32 and 64 bit

Wireless Module: Intel, Broadcom, Atheros

Limitation

1. *eNet Management* will Internet Connected if the connection between client and gateway is connected.
2. *eNet Management* will Internet Connected if the client connects to an Ad Hoc network..

Support Languages

eNet Management v2.6 for Vista support below languages for user interface.

1. English (EN).
2. Traditional Chinese (TC)
3. Germany (DE)
4. Simplified Chinese (SC)

| | | |
|---|----------------------------|---------------|
| Document Name: Empowering Network Management v2.6 Product External Spec. | Doc No. : PES-03142006 | Version: 1.18 |
| | Effective Date: 2007/08/30 | Page: 8 of 49 |

5. Spanish (ES)
6. Italy (IT)
7. Portuguese (PT)
8. Dutch (NL)
9. Swedish (SV)
10. Japanese (JA)
11. France (FR)
12. Czech (CZ)
13. Danish (DA)
14. Norwegian (NO)
15. Greek (GK or NL)
16. Polish (PO)
17. Russia (RU)
18. Finnish (FI)
19. Turkish (TK)
20. Hungarian (HU)

Code Name of *eNet Management* v2.6 for Vista

The code name of *eNet Management* v2.6 for Vista is Uranus.

Variation between *eNet Management* Titan (v2.5 for XP)

1. Support Windows Vista
2. Support Intel, Broadcom and Atheros WLAN modules
3. *eNet* will leverage on Vista for managing WLAN connection

| | | |
|---|----------------------------|---------------|
| Document Name: Empowering Network Management v2.6 Product External Spec. | Doc No. : PES-03142006 | Version: 1.18 |
| | Effective Date: 2007/08/30 | Page: 9 of 49 |

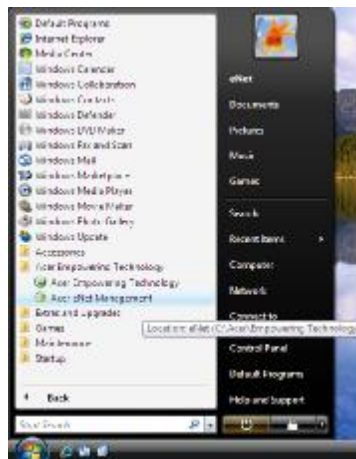
Starting eNet Management

If user wants to launch *eNet Management* automatically as the system has been booted, user can check the option **Launch Acer eNet Management automatically when starting Windows**. The default value is enabled. If user needs to start *eNet Management* manually, user can find the starter in:

- I Empowering Technology Framework toolbar

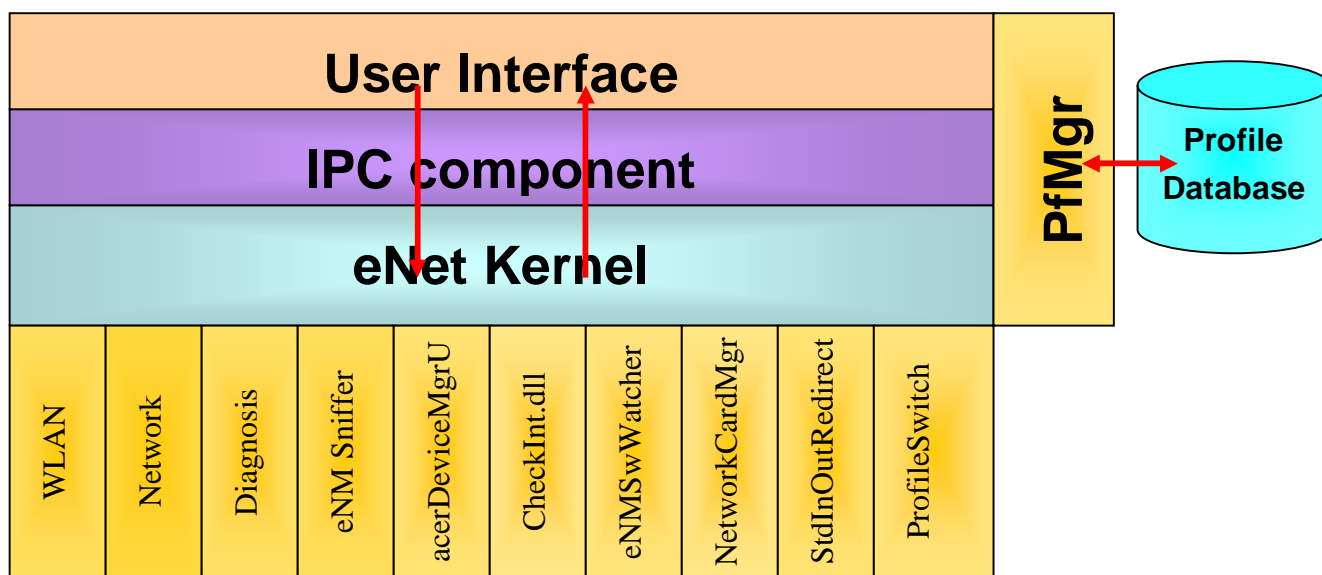


- I Windows -> Start -> All programs -> Acer Empowering Technology -> Acer eNet Management



| | | |
|---|----------------------------|----------------|
| Document Name: Empowering Network Management v2.6 Product External Spec. | Doc No. : PES-03142006 | Version: 1.18 |
| | Effective Date: 2007/08/30 | Page: 10 of 49 |

System Architecture



Mini-Port Driver & Network Interface Card

| | | |
|---|----------------------------|----------------|
| Document Name: Empowering Network Management v2.6 Product External Spec. | Doc No. : PES-03142006 | Version: 1.18 |
| | Effective Date: 2007/08/30 | Page: 11 of 49 |

Profile Structure

Profile name:

LAN settings:

- IP Address
- Subnet Mask
- Default Gateway
- DNS
- MAC address of Gateway

WLAN settings:

- IP Address
- Subnet Mask
- Default Gateway
- DNS
- SSIDs: User can specify zero or more wireless networks in the preferred list of a location profile. The maximum number of access point in a profile is 10.\

Please note: Only access point (Infrastructure mode) can be added to the preferred list of profile.

Internet settings:

- Proxy settings
- Firewall setting

PPPoE settings:

User can specify a PPPoE connection in a profile, once the profile is applied, *eNet Management* will dial up the PPPoE connection. PPPoE settings include user name and password. A third party PPPoE dial up utility also can be assigned here.

Default printer setting:

eNet Management allows user to specify the default printer while profiles switched.

| | | |
|--|-----------------------------------|-----------------------|
| Document Name: Empowering Network Management v2.6 Product External Spec. | Doc No. : PES-03142006 | Version: 1.18 |
| | Effective Date: 2007/08/30 | Page: 12 of 49 |

Shared folder settings:

User can select the folder to share. The maximum number of folders in a profile is 30.

Launched programs settings:

User can select the program to launch after the profile is applied successfully. The maximum number of programs in a profile is 5.

| | | |
|---|----------------------------|----------------|
| Document Name: Empowering Network Management v2.6 Product External Spec. | Doc No. : PES-03142006 | Version: 1.18 |
| | Effective Date: 2007/08/30 | Page: 13 of 49 |

Functional Spec

Profile Management

A default profile called “Auto” is created as *eNet Management* is launched first. There are many restrictions on this profile, so that it can be used more effectively and stands for what it means.

1. User cannot create a profile named “Auto”. This profile is reserved by *eNet Management*.
2. User also cannot rename, delete or export the profile named “Auto”.
3. The profile named “Auto” can be edited, but *eNet Management* will ask user to save as another profile.
4. All the settings of “Auto” profile are default settings:
 - u TCP/IP settings: DHCP mode
 - u Firewall setting: Enabled
 - u Proxy settings: Disabled
 - u PPPoE settings: Disabled
 - u Shared folder settings: Disabled
 - u Default printer: Disable
 - u Launch program settings: Disabled
 - u WLAN settings: Disabled. It means that *eNet Management* will try to establish a WLAN connection with optimal signal strength and speed.
5. The maximum count of access point in the preferred list is 10.
6. The PPPoE settings, shared folder settings, launch program and default printer settings of profile cannot be exported.
7. The username and password fields in the profile will be encrypted.

Note that:

| | | |
|---|----------------------------|----------------|
| Document Name: Empowering Network Management v2.6 Product External Spec. | Doc No. : PES-03142006 | Version: 1.18 |
| | Effective Date: 2007/08/30 | Page: 14 of 49 |

1. The profile name is not case-sensitive. So any combination of upper or lower cases are considered as one.
2. The optimal access point means that an access point with the strongest signal strength and the fastest speed.

| Category | Function | Specification |
|--------------------|----------------|--|
| Profile Management | Create Profile | <ol style="list-style-type: none"> 1. <i>eNet Management</i> will open a wizard guiding user to create a profile step by step. 2. User cannot create a profile named "Auto". 3. The length of profile name is limited to 63 characters. 4. For LAN connection, the MAC address of gateway will be stored in the profile if the LAN connection is connected as user is treating LAN profile. Otherwise, the field of MAC address of gateway in the profile is empty. However, the field of MAC address of gateway will be filled in the suitable value as this profile has applied successfully and the client has already got the IP address for LAN adapter. 5. For WLAN connection, the network name (SSID) of access point will be stored in the profile. The access point operated as an Ad Hoc mode cannot be added to the access point preferred list of profile. |

| | | |
|---|----------------------------|----------------|
| Document Name: Empowering Network Management v2.6 Product External Spec. | Doc No. : PES-03142006 | Version: 1.18 |
| | Effective Date: 2007/08/30 | Page: 15 of 49 |

| | | |
|--|----------------|---|
| | Delete Profile | <ol style="list-style-type: none"> 1. User can delete a profile from profile list. 2. Deleting the active profile will cause active profile to be changed to "Auto" profile. 3. User cannot delete a profile named "Auto". |
| | Edit Profile | <ol style="list-style-type: none"> 1. User can edit any existing profile. 2. <i>eNet Management</i> will ask user to save as another profile if the editing profile is "Auto" profile. |
| | Rename Profile | <ol style="list-style-type: none"> 1. User can rename the selected profile. 2. The profile named "Auto" cannot be renamed. |
| | Export Profile | <ol style="list-style-type: none"> 1. User can export one or more profiles into a single well-formatted file. 2. User can specify the output path. 3. The exporting file is encrypted. 4. User can assign a password for the exporting file to prevent malicious personnel. 5. The profile named "Auto" cannot be exported. 6. The settings of default printer, PPPoE, shared folder and launch program stored in the profile do not be exported. |
| | Import Profile | <ol style="list-style-type: none"> 1. User can import profiles from an exporting file. 2. User can specify one or more profiles to import. 3. Input password if necessary 4. The imported data of access point will be imported to Windows Vista |

| | | |
|---|----------------------------|----------------|
| Document Name: Empowering Network Management v2.6 Product External Spec. | Doc No. : PES-03142006 | Version: 1.18 |
| | Effective Date: 2007/08/30 | Page: 16 of 49 |

| | | |
|--|-----------------------------------|--------------------------------------|
| | Per-user based profile management | Every user has his/her own profiles. |
|--|-----------------------------------|--------------------------------------|

Profile Switching

eNet Management will show Internet connected if the connection is connected to Internet as *eNet Management* has applies profile successfully. The share folder, default printer and launch program settings will be applied if the connection is connected to Internet as *eNet Management* has applies profile successfully.

| Category | Function | Specification |
|-------------------|--------------------------|--|
| Profile Switching | Manual profile switching | <ol style="list-style-type: none"> 1. User can switch the selected profile manually by profile list. 2. All settings in the specified profile are applied. 3. If profiles with PPPoE settings, <i>eNet Management</i> will dial up the connection automatically. 4. The firewall setting, IE proxy settings, shared folder settings and default printer setting will not be applied if the Internet connection cannot be established successfully. |

| | | |
|---|----------------------------|----------------|
| Document Name: Empowering Network Management v2.6 Product External Spec. | Doc No. : PES-03142006 | Version: 1.18 |
| | Effective Date: 2007/08/30 | Page: 17 of 49 |

| | | |
|--|-----------------------------|---|
| | Automatic switching profile | <ol style="list-style-type: none"> 1. The function “Auto switching” will be triggered as <i>eNet</i> is launched. <i>eNet</i> will find the suitable profile for a specific location and switch to the selected profile. 2. The function also will be triggered if the Internet connection is disconnected. <i>eNe</i> will detected the status of Internet connection every 30 sec. 3. For LAN connection, the criterion for selecting a suitable profile is based on the MAC address of gateway. However, <i>eNet</i> will search the suitable profile as the client has already got the IP address for LAN adapter. 4. For WLAN connection, the criterion for selecting a suitable profile is based on the SSID. All access points named the same name are treated as one access point. 5. The function “Auto profile switching” also will be triggered as system wakes up form S3 or S4 state. 6. For Domain user, the original WLAN connection will be kept as <i>eNet</i> is launched. 7. This function will be disabled if user disconnects the WLAN connection manually via <i>eNet</i>’s UI. 8. This function will be enabled again in following condition: <ol style="list-style-type: none"> a. User creates WLAN connection manually b. User apples profile manually c. System resumes from S3 or S4 states. d. Wireless antenna is turned on e. LAN cable is plug in |
|--|-----------------------------|---|

| | | |
|---|----------------------------|----------------|
| Document Name: Empowering Network Management v2.6 Product External Spec. | Doc No. : PES-03142006 | Version: 1.18 |
| | Effective Date: 2007/08/30 | Page: 18 of 49 |

Wireless Management

In *eNet* v2.6 for Vista, the function of WLAN management will leverage on Vista. User can launch Vista's wireless utility from *eNet* v2.6 for Vista to manage WLAN connection. The supported security settings are depended on IHV. The CCX support also is depended on IHV. On the other hand, user only can create ad-hoc connection via Windows Vista. *eNet* v2.6 only supports the WLAN connection operated as infrastructure mode.

Wireless Association

| Category | Function | Specification |
|----------------------|-----------------------------|---|
| Wireless association | Manual wireless association | <ol style="list-style-type: none"> 2. User can create a WLAN connection by selecting an access point from access point list in main UI or system tray, Widget or Windows Vista's VAN program. 3. <i>eNet management</i> will find the corresponding profile if the WLAN connection is established successfully no matter the WLAN connection is established by <i>eNet Management</i> or Windows Vista's VAN program. If the corresponding profile is found, the settings stored in the profile will be applied. Otherwise, <i>eNet Management</i> will show a window to ask whether user wants to save the settings as a profile (Only create WLAN connection via <i>eNet's</i> UI). |

| | | |
|---|----------------------------|----------------|
| Document Name: Empowering Network Management v2.6 Product External Spec. | Doc No. : PES-03142006 | Version: 1.18 |
| | Effective Date: 2007/08/30 | Page: 19 of 49 |

| | | |
|--|--------------------------------|---|
| | Automatic wireless association | <ol style="list-style-type: none"> 1. The function “Auto wireless association” is triggered if the event of WLAN connection disconnected is detected by <i>eNet Management</i> or the wireless antenna is turned on. 2. The function will not be triggered if the WLAN connection is disconnected manually by user from <i>eNet’s UI</i>. This function also will be started if user disconnects the WLAN connection manually from Windows Vista’s VAN program. 3. <i>eNet Management</i> will try to create a WLAN connection with optimal signal strength and speed. 4. <i>eNet management</i> will find the corresponding profile if the WLAN connection is established successfully. If the corresponding profile is found, the settings stored in the profile will be applied. 5. The function of automatic wireless association will be disabled if user disconnects WLAN connection manually via <i>eNet</i>. (The behavior is similar to Vista) This function will be enabled as user applies profile or connect to a WLAN connection, wireless antenna is turned on, or system is resumed from S3 or S4. |
|--|--------------------------------|---|

System Tray

| | | |
|---|----------------------------|----------------|
| Document Name: Empowering Network Management v2.6 Product External Spec. | Doc No. : PES-03142006 | Version: 1.18 |
| | Effective Date: 2007/08/30 | Page: 20 of 49 |

| Category | Function | Specification |
|-------------|---|---|
| System Tray | Switch profile and view profile list | <ol style="list-style-type: none"> 1. User can switch profile from system tray conveniently. 2. The maximum number of profile shown in the menu of system tray is 5. |
| | Open <i>eNet Management</i> Main UI | User can open <i>eNet Management</i> main UI from system tray. |
| | View available WLANs | <ol style="list-style-type: none"> 1. The field only will list four access points with strongest signal and fastest speed. 2. User can open Windows Vista's VAN program from system tray. 3. The maximum number of access point shown in the menu of system tray is 4 and only access point operated for infrastructure mode will be shown. 4. Two access points with the same SSID will be shown in the list concurrently only in the following condition: one AP works without security setting and another one works with security setting. Otherwise, only one SSID will be shown in the list. |
| | Exit <i>eNet Management</i> | |
| | Display the status of Internet connection | <i>eNet Management</i> system tray will popup a message to show "Internet connected" or "Internet disconnected" when the status changed. |
| | Display the connected information of WLAN | <i>eNet Management</i> system tray will popup an message to show "Connected to AP-1" (AP-1 is the AP name) if <i>eNet Management</i> is connecting to WLAN network. |

| | | |
|---|----------------------------|----------------|
| Document Name: Empowering Network Management v2.6 Product External Spec. | Doc No. : PES-03142006 | Version: 1.18 |
| | Effective Date: 2007/08/30 | Page: 21 of 49 |

Troubleshooting

| Category | Function | Specification |
|-----------------|------------------|---|
| Troubleshooting | Network Advisor | Network Advisor can diagnose WLAN, LAN and Internet connectivity problems, and guide users to resolve the problems. |
| | Diagnosing Tools | Include ipconfig / ping / traceroute |

Others

| Category | Function | Specification |
|----------|------------------------|---|
| Others | Program Settings | <ol style="list-style-type: none"> 1. Launch <i>eNet Management</i> automatically when starting Windows. The default value is enabled. 2. Switch network automatically. The default value is enabled. 3. Allow <i>eNet Management</i> associate to an open wireless network automatically. <i>eNet Management</i> will ask user for the default value as <i>eNet</i> is launched first time. |
| | Network Cards Settings | <ol style="list-style-type: none"> 1. Wireless Network Card Setting. 2. Wired Network Card Setting. |
| | Network Information | <p>The following information will be shown:</p> <ul style="list-style-type: none"> - Computer name - Default printer - WLAN adapter information - Wireless network information - LAN adapter information - Proxy settings - PPPoE information - VPN information |

| | | |
|---|----------------------------|----------------|
| Document Name: Empowering Network Management v2.6 Product External Spec. | Doc No. : PES-03142006 | Version: 1.18 |
| | Effective Date: 2007/08/30 | Page: 22 of 49 |

| | | |
|--|------------------|---|
| | PPPoE Management | <ol style="list-style-type: none">1. User can configure PPPoE settings via <i>Net Management</i>.2. <i>eNet Management</i> will check the connection name for all existing RAS connections, including PPPoE and VPN, as crating PPPoE connection.3. User also can establish PPPoE connection by <i>eNet Management</i>. |
| | VPN Management | <ol style="list-style-type: none">1. User can configure VPN settings via <i>eNet Management</i>.2. <i>eNet Management</i> will check the connection name for all existing RAS connections, including PPPoE and VPN, as crating VPN connection.3. User also can connect/disconnect VPN connection by <i>eNet Management</i>. |
| | Help Files | Support language: EN/TC/SC/GE/SP/IT/FR/PT/JP/SV/DT |

| | | |
|---|----------------------------|----------------|
| Document Name: Empowering Network Management v2.6 Product External Spec. | Doc No. : PES-03142006 | Version: 1.18 |
| | Effective Date: 2007/08/30 | Page: 23 of 49 |

Multi-User Condition

eNet Management supports multi-user scenario. *eNet Management* can be executed concurrently by multi-user and each user has own profile settings. *eNet* will trigger auto profile switching process as user switches to original account. Therefore, *eNet* will identify the location by the signal strength of AP or the MAC of Gateway of LAN connection and find the corresponding profile, and apply the profile. This behavior does not be impacted by the value of Switch profile automatically option.

System Hibernation

When system wakes up from hibernation/Standby state, *eNet Management* will identify the location first, *eNet Management* will find a matched profile for target location and switch to the profile if profile auto switching option is enabled. This is based on our assumption that user moved from one location to another location as system resumed from hibernation/Standby state. This behavior does not be impacted by the value of Switch profile automatically option.

| | | |
|---|----------------------------|----------------|
| Document Name: Empowering Network Management v2.6 Product External Spec. | Doc No. : PES-03142006 | Version: 1.18 |
| | Effective Date: 2007/08/30 | Page: 24 of 49 |

User Interface and Experience

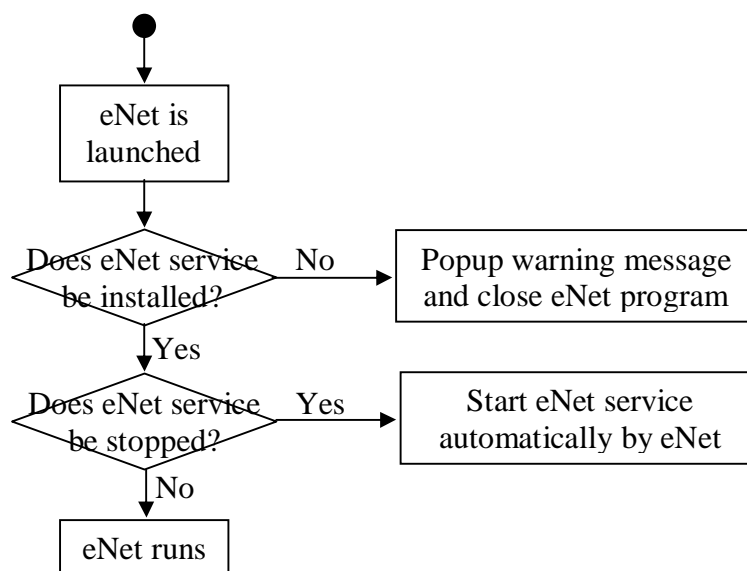
Relationships between eNet Management and 3G Software

eNet Management can co-exist with 3G software. Therefore, *eNet* will not detect 3G software as 3G software is launched.

Detecting the status of eNet Service

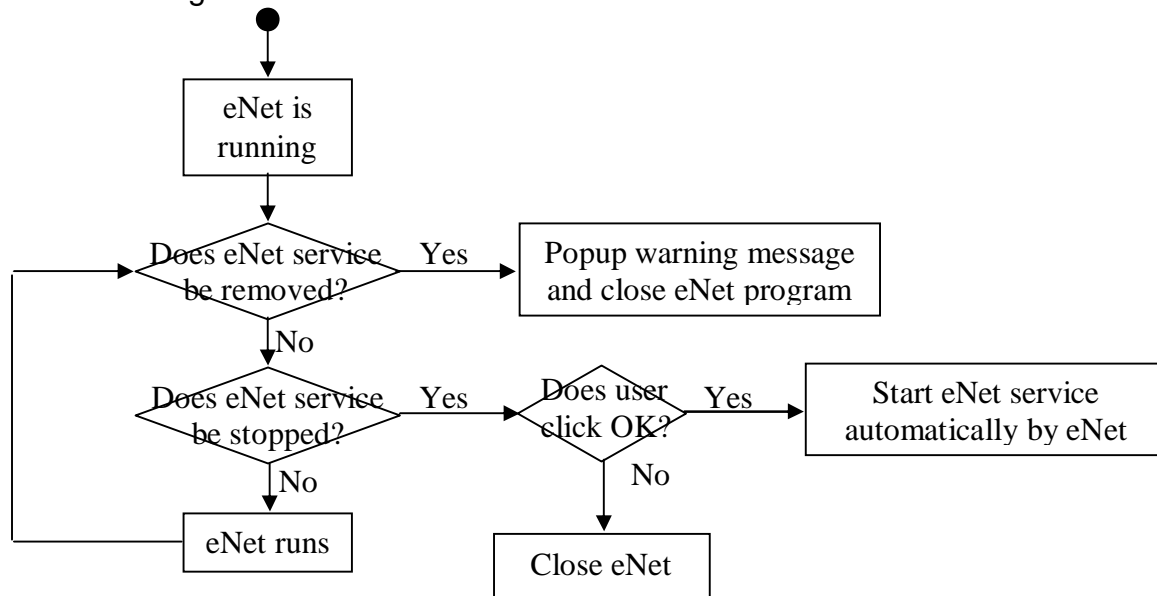
A service named *eNet Service* will be installed to system if Acer *eNet Management* is installed successfully. *eNet* performs some functions via this service, such as applying TCP/IP, apply shared folder settings, etc. Therefore, *eNet* must make sure the service is workable as *eNet* is running. The following lists the two scenarios for detecting *eNet* service.

a. As *eNet* is launched



| | | |
|---|----------------------------|----------------|
| Document Name: Empowering Network Management v2.6 Product External Spec. | Doc No. : PES-03142006 | Version: 1.18 |
| | Effective Date: 2007/08/30 | Page: 25 of 49 |

b. As *eNet* is running



| | | |
|---|----------------------------|----------------|
| Document Name: Empowering Network Management v2.6 Product External Spec. | Doc No. : PES-03142006 | Version: 1.18 |
| | Effective Date: 2007/08/30 | Page: 26 of 49 |

Main UI Window



The main UI of *eNet Management* is designed to make it easier to use and more intuitive for user. There several components in *eNet Management* main UI, including profile list, Edit/Stop/Save button, VPN button and Message bar.

- n Profile list - shows the all profiles, including the “Auto” profile and profiles user created.
- n VPN button – Connect or disconnect VPN connection
- n Edit/Stop/Save button – This button has three states.
 - u Save: There two scenarios this button would show Save
 - l When user uses “Auto” profile and connected to an AP
 - l When user uses a profile other than “Auto” and get connected to an AP not in the profile
 - u Stop: When making connection, it will show Stop
 - u Edit: When *eNet Management* has applied a profile successfully or the “Auto” profile is applied, but the connection cannot be established successfully. On the other hand, this button will be in Edit mode if the client connected to an Ad Hoc network, because eNet does not support Ad Hoc mode.
- n Message bar – shows the status message of applying profile or wireless association.

WLAN part:

| | | |
|---|----------------------------|----------------|
| Document Name: Empowering Network Management v2.6 Product External Spec. | Doc No. : PES-03142006 | Version: 1.18 |
| | Effective Date: 2007/08/30 | Page: 27 of 49 |

In WLAN part of main UI of *eNet Management*, it consists of several components, including AP list and Connect/Disconnect button.

- n AP list – List all available access points detected by *eNet Management*
- n Connect/Disconnect button – Connect/Disconnect WLAN connection

Note: Two access points with duplicate SSID will be shown in the AP list only in the following condition: one AP works without security setting and another one works with security setting.

Besides the above components, there are one block shows the status of connection.

LAN part:

Only one block shows the status of connection.

Note: Only profile list, AP list will show entire name of profile or access point using tip as user moves mouse over the components.

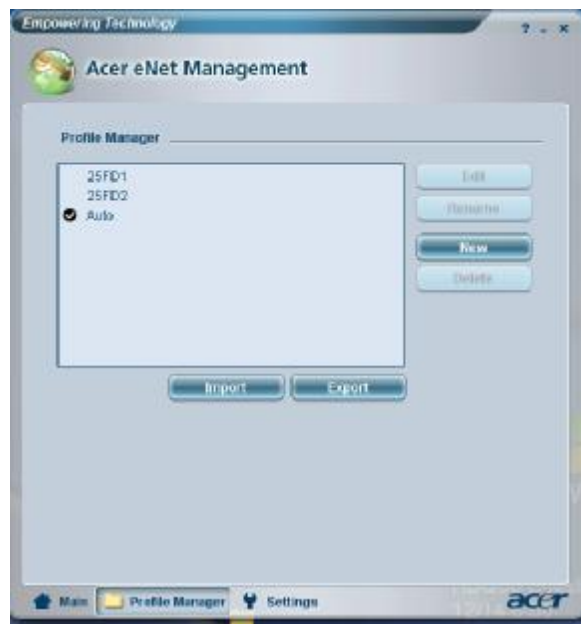
In addition to the above parts, there are also five buttons on *eNet Management* main UI window are:

1. Profile: Launch profile manager. User can manage the profile in the profile manager page. In this page, all profile, including WLAN and LAN are shown. Please refer to Profile Manager section.
2. % WiFi network: The indicator will show the number of access points in range. On the other hand, user can launch the **Windows Vista's VAN program** by clicking this indicator. User can manage the wireless network in the **Windows Vista's VAN page**. Because *eNet* will leverage on Vista for managing WLAN connections, the Wireless Manager page means **Windows Vista's VAN page**. Please refer to Wireless Manager section.
3. Settings: Open *eNet Management Settings* page, please refer to Settings section.
4. Advisor: User can diagnose the network problem by clicking this button. An **Advisor** page will be shown if user clicks this button. Please refer to Advisor section.

| | | |
|---|----------------------------|----------------|
| Document Name: Empowering Network Management v2.6 Product External Spec. | Doc No. : PES-03142006 | Version: 1.18 |
| | Effective Date: 2007/08/30 | Page: 28 of 49 |

5. Help: Launch help file.

Note: Only advisor button will show tip as user moves mouse over the components. On the other hand, This UI style is used for Acer TravelMate series platform. However, Acer will provide another UI style for Aspire series platform.



Profile Manager

A page for managing user's profiles is shown by clicking the **Profile** button on the main UI of *eNet Management*. The **Profile Manager** page comes with six buttons and a profile list showing profiles user has created. The active profile is marked with a hook before profile name. Note that the "Auto" profile is present by default and profile name is not case-sensitive. Therefore, "auto" and "Auto" are considered the same. The following shows user how each button works:

1. Edit button: Click this button to edit a profile. Alternatively, user can invoke this function by double-click on a profile.

Note that there are various scenarios:

- Editing "non-Auto" profile:
 - § Active profile: It will close this window and apply the profile immediately.
 - § Non active profile: Save it normally
- Editing "Auto" profile: It will ask user to save it as another profile.
 - § The profile user saves already exists: It will ask if you want to replace.

| | | |
|---|----------------------------|----------------|
| Document Name: Empowering Network Management v2.6 Product External Spec. | Doc No. : PES-03142006 | Version: 1.18 |
| | Effective Date: 2007/08/30 | Page: 29 of 49 |

§ The profile user saves is active profile: It will ask if you want to apply right away. If user applies, it will close the **Profile Manager** page and apply.

2. New button: Click this button to add a profile by invoking profile wizard.
 - The profile name cannot be “Auto”.
 - The profile name cannot be the same as any profile in the list.
 - The profile name cannot be only space
3. Import button: Click this button to import profiles.
4. Rename button: The profile name cannot be “Auto” nor contain only space. The “Auto” profile cannot be renamed. If you rename a profile to active profile, it will apply the profile immediately.
5. Delete button:
 - Click this button to delete the selected profile.
 - “Auto” profile cannot be deleted.
 - If you delete active profile, the active profile will set to “Auto” profile.
6. Export button: Click this button to export profile. “Auto” profile cannot be exported.

Note: Only profile list will show entire name of profile using tip as user moves mouse over the components. In addition, the name of selected profile will be shown as user moves mouse over the components.

Create Profile



| | | |
|---|----------------------------|----------------|
| Document Name: Empowering Network Management v2.6 Product External Spec. | Doc No. : PES-03142006 | Version: 1.18 |
| | Effective Date: 2007/08/30 | Page: 30 of 49 |

To create a new profile, clicks the **New** button from the **Profile Manager** page. A wizard will be shown and leads user to create a profile step by step as followings:

First of all, user must name the profile. The profile name must be unique. User must choose connection type. The connection type in profile can be one or more. It can help user to create profile. One option is provided to user:

- I Capture settings: The following are possible scenarios for each connection with quick build:
 - a. Wired LAN connection: It will capture current TCP/IP configuration for your LAN automatically.
 - b. WLAN connection: It will capture currently connected AP settings and WLAN TCP/IP configuration.

With all scenarios, the following settings are captured automatically:

- Proxy settings
- Firewall settings
- Default printer

The following settings will be ignored:

- Shared folder
- Launched program

Click **Next** to continue, or click **Cancel** to abort.



| | | |
|---|----------------------------|----------------|
| Document Name: Empowering Network Management v2.6 Product External Spec. | Doc No. : PES-03142006 | Version: 1.18 |
| | Effective Date: 2007/08/30 | Page: 31 of 49 |

The **WLAN Settings** page will be shown if user chooses the wireless LAN connection type. In **WLAN Settings** page, user can configure WLAN preferred list for the profile. As the figure shown above, a list in this settings page to show the all available access points detected in range and user can pick one or some access points in this list. User also can click the **Rescan** button to re-scan WLANs.



User also can click the **Add** button to add an access point (SSID) manually (for hidden SSID). When the **Add** button is clicked, an **Add wireless network** page will be shown as above. User can input network name and then click the **OK** button in the page.

User can configure the settings of a selected access point by clicking **Edit** button. *e/Net* will pop up the simple security settings page. User can enter the WEP key through the simple security settings page. If the selected access point works with advanced security settings, the security settings page of Vista's wireless utility will be shown as user clicks **Other settings** button. The supported security settings depended on IHV.



Click **Next** to continue, click **Previous** to go back previous wizard page, or click **Cancel** to abort.

| | | |
|---|----------------------------|----------------|
| Document Name: Empowering Network Management v2.6 Product External Spec. | Doc No. : PES-03142006 | Version: 1.18 |
| | Effective Date: 2007/08/30 | Page: 32 of 49 |

In the **TCP/IP Settings** page for WLAN, user must configure adapter's TCP/IP settings of WLAN or LAN adapters, including IP Address, Subnet Mask, Default Gateway, DNS Server. TCP/IP settings can be assigned manually (fixed IP) or automatically (dynamic IP, DHCP client). Note that for all fields, user cannot input 0.0.0.0. Otherwise, user will not see the correct IP settings in connection status after applying this profile. Please note that the **TCP/IP Settings** page for WLAN and LAN are the same.

Click **Next** to continue, click **Previous** to go back previous wizard page, or click **Cancel** to abort.

User can configure Internet proxy if checkbox **Apply Internet Settings** is checked (default is unchecked) and configure the firewall settings if checkbox **Apply Firewall Settings** is checked. In this case, Internet proxy settings and firewall settings configured will be the settings of the profile. Otherwise, user can un-check the **Apply Internet Settings** or **Apply Firewall Settings**

| | | |
|---|----------------------------|----------------|
| Document Name: Empowering Network Management v2.6 Product External Spec. | Doc No. : PES-03142006 | Version: 1.18 |
| | Effective Date: 2007/08/30 | Page: 33 of 49 |

checkboxes to ignore these settings (keep the current settings of windows) while profile switched. The following page is the same for WLAN or LAN profile.

Click **Next** to continue, click **Previous** to go back previous wizard page, or click **Cancel** to abort.



In **PPPoE** page, user can configure PPPoE connections, including creation by *eNet Management* or Window. To configure PPPoE, user can check the checkbox **Apply PPPoE Settings** (default is unchecked). There are two ways to configure PPPoE connection: **Manually Set up a PPPoE Connection** and **Use the 3rd program**.

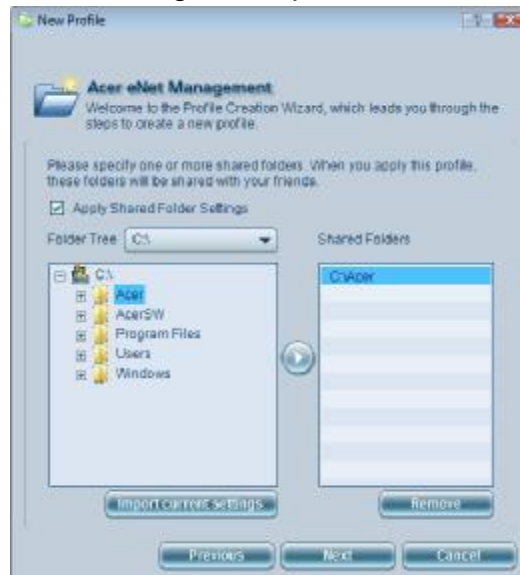


To use **Manually Setup a PPPoE Connection**, user can select radio button **Manually Setup a PPPoE Connection**. In this case, *eNet* will list existed PPPoE phonebook items of Windows as shown in above figure. User can select a desired PPPoE phonebook item or add a new one by clicking the **Add** button and the new PPPoE dialog will be displayed as above:

The Phonebook name field is necessary. However, the Username and Password fields can be empty. This behavior is the same with Windows Vista. In **Edit** mode, the same page will be shown. The Password field will be clear if the Username field is empty. On the other hand, there are * characters in Password field even if user does not enter the password as creating PPPoE connection on condition that Username field is not empty.

| | | |
|---|----------------------------|----------------|
| Document Name: Empowering Network Management v2.6 Product External Spec. | Doc No. : PES-03142006 | Version: 1.18 |
| | Effective Date: 2007/08/30 | Page: 34 of 49 |

Click **Next** to continue, click **Previous** to go back previous wizard page, or click **Cancel** to abort.



To configure shared folder setting within profile, user can check the checkbox **Apply Shared Folder Settings** (default is unchecked). eNet will apply the shared folder settings if this checkbox is checked. Otherwise, eNet will ignore the shared folder settings as target profile is applied. In other words, system will keep original settings. As figure shown above, the left side is a tree control which lists directories in the computer, and at the right side is a list control that lists configured shared folder. If there were shared folders already configured by user or current using profile, **Configured Shared Folders List** will list them, user can keep these shared folders or remove them later. User also can load current shared folders in system to **Configured Shared Folders list** by clicking the button named **Import current settings**.

To add a shared folder, user can select a folder and click the arrow button and the selected folder will be added into the **Configured Shared Folders List**. To remove a configured shared folder item, user can click the **Remove** button to remove the selected item from the list.

Once a profile with shared folder configuration switched, all shared folders in system will be clear first, and then apply shared folders configured in the switching profile.

Click **Next** to continue, click **Previous** to go back previous wizard page, or click **Cancel** to abort.

| | | |
|---|----------------------------|----------------|
| Document Name: Empowering Network Management v2.6 Product External Spec. | Doc No. : PES-03142006 | Version: 1.18 |
| | Effective Date: 2007/08/30 | Page: 35 of 49 |



User can specify default printer setting while the profile switched. To specify the default printer, check the **Apply Default Printer** checkbox (default is unchecked). In this case, printers installed in computer will listed, and user can specify one of these printers as the default printer. Uncheck the **Apply Default Printer** to ignore default printer setting and the default printer currently set won't be changed while the profile switched.

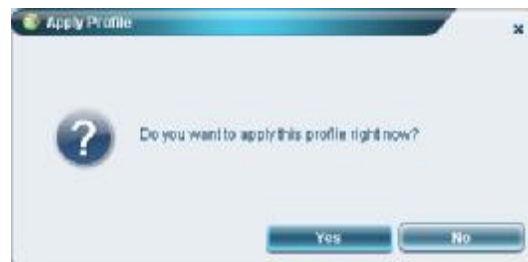
User also can specify programs to launch after the profile switched successfully. To specify program to launch, user can check the **Apply Launch Programs** (default is unchecked) and then add programs by clicking the **Add** button. To remove program items specified, click the **Remove** button.

Click **Next** to continue, click **Previous** to go back previous wizard page, or click **Cancel** to abort.



| | | |
|---|----------------------------|----------------|
| Document Name: Empowering Network Management v2.6 Product External Spec. | Doc No. : PES-03142006 | Version: 1.18 |
| | Effective Date: 2007/08/30 | Page: 36 of 49 |

After the profile is configured, the last wizard page will show **Congratulation** message and the summarized information. Click **Finish** to create the profile. As user has created the profile, *eNet management* will pop up a window to ask user whether they want to apply this profile right now or not.



Edit Profile

To edit a profile clicks the **Edit** button in the main UI of *eNet Management* or **Profile Manger** page. Figure shown below illustrates the profile edit dialog. User can re-configure desired settings by clicking the corresponding tab.



Please note, if a profile is edited, then *eNet Management* will check if there is any modification of the profile and save the profile. If user edits the current profile, *eNet Management* will prompt user to make sure his purpose, and if user clicks the **OK** button, after the profile was modified, *eNet Management* will apply the profile immediately.



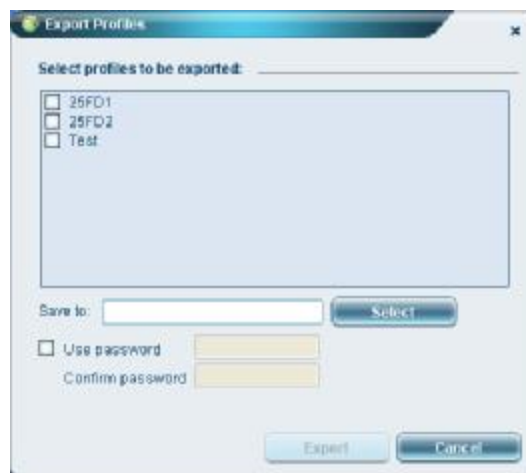
| | | |
|---|----------------------------|----------------|
| Document Name: Empowering Network Management v2.6 Product External Spec. | Doc No. : PES-03142006 | Version: 1.18 |
| | Effective Date: 2007/08/30 | Page: 37 of 49 |

Please refer to Create Profile section described above to know about profiles settings.

Delete Profile

User can delete an existing profile except the “Auto” profile. User is also allowed to delete the active profile. If user really wants to delete the active profile, the active profile will changed to “Auto”.

Export Profile

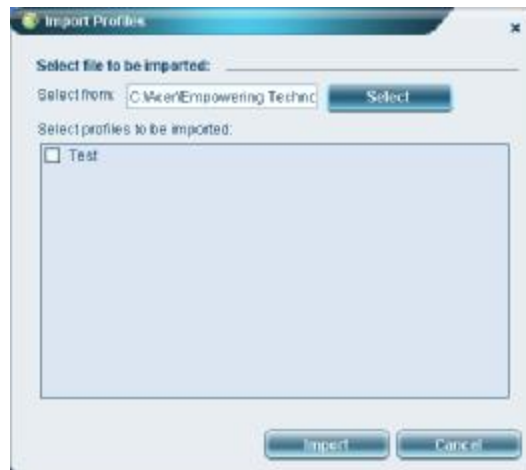


User can export profiles by clicking the **Export** button on main window. The figure shown above illustrates a profile export dialog. Profile export dialog will list existing profiles, except for the profile named Auto, and user can select one or more profiles to be exported and specify the file name of the exporting file. The exported file will be encrypted. User also can assign a password to protect the exporting file to prevent malicious individual having this exporting file. Click **Export** to export profiles or click **Cancel** to abort export.

Import Profile

eNet Management allows user to import profiles from an *eNet Management* exporting file. Figure shown above illustrates the Import Profile dialog while user clicks the **Import** button in the main window. User can specify a file by clicking the **Browse** button. If the importing file protected by a set of password, user must input a valid password to open the file. The figure shown below is the password page.

| | | |
|---|----------------------------|----------------|
| Document Name: Empowering Network Management v2.6 Product External Spec. | Doc No. : PES-03142006 | Version: 1.18 |
| | Effective Date: 2007/08/30 | Page: 38 of 49 |



The content of the importing file will be loaded if a valid password is given. Otherwise, a warning message will be shown and the content of the importing file won't be loaded. The figure shown below illustrates that a valid password is inputted.



Once the content of importing file is loaded, user can select one or more profile items listed to import. Click **Import** to import selected profiles or click **Cancel** to abort.

Profile Manual Switching

User can manually switch to an existing profile by selecting a profile from profile list in the main UI window. Another way is from *eNet Management* system tray. Following illustrates *eNet Management* is executing profile switching.

When switching profile, the status bar will show current switching status. User can stop profile switching by click the **Stop** button.

When the profile is switched, *eNet Management* will apply networking/Internet settings and location dependent configurations, such as default printer. If PPPoE is configured in the profile,

| | | |
|---|----------------------------|----------------|
| Document Name: Empowering Network Management v2.6 Product External Spec. | Doc No. : PES-03142006 | Version: 1.18 |
| | Effective Date: 2007/08/30 | Page: 39 of 49 |

eNet Management will dial up PPPoE connection automatically as the profile has applied successfully.

If there are networking (LAN or WLAN) or Internet problems occurred, *eNet Management's* Network Advisor will diagnose the problem and help user to solve it. Please refer to Network Advisor section to know more about Network Advisor.



Profile Auto Switching

If the option **Switching Networks Automatically** is enabled, *eNet Management* will identify the location and switch to a matched profile. Just like manually applying a profile, when the profile is switched, *eNet Management* will automatically apply networking/Internet settings and location dependent configurations such as default printer. The default value of the **Switching Networks Automatically** is enabled

Considering WLAN connection, *eNet Management* will create the WLAN connection based on the WLAN Preferred List of profile and the signal strength and speed of the APs in the environments. The rules is as following

1. If no matched profile for this location, then associated to an AP with the best signal strength which can be connected. If there are more AP that has the same signal strength, then *eNet Management* will be choice one according to type of AP as band g > band a > band b. If the best one cannot be connected due to the MAC filter or wrong security

| | | |
|---|----------------------------|----------------|
| Document Name: Empowering Network Management v2.6 Product External Spec. | Doc No. : PES-03142006 | Version: 1.18 |
| | Effective Date: 2007/08/30 | Page: 40 of 49 |

settings, *eNet Management* will pick up next one with the second best signal strength. If no matched profile found and there are available wireless networks:

- I If the **Allow *eNet Management* associate to an opened wireless network** setting is checked, then *eNet Management* will try to create the wireless connection by associating to an opened wireless network. If there is no opened access point (SSID) in range, then wireless disconnected.
 - I If the **Allow *eNet Management* associate to an opened wireless network** setting is unchecked, then wireless will disconnect.
2. If there are matched profiles, *eNet Management* will apply the profiles according to the order of signal strength and speed.

If there are networking (LAN or WLAN) or internet problems occurred, the Network Advisor will diagnose the problem and help user to eliminate it. Please refer to Network Advisor section to know more about Network Advisor.

After the networking connections are created (WLAN or LAN); user can save current network settings as a new profile. Please refer to Main UI window to know more about how to save current network settings as a new profile while there is no profile applied.

Please note, the location identify of LAN is based on the MAC address of gateway, for WLAN, is based on the network name (SSID) of access point, so if the MAC address of the gateway or the network name (SSID) of access point is changed, *eNet Management* will not find the matched profile. If there are more than one matched profiles for current location, *eNet Management* will switch one by one until the internet is connected. If all matched profiles are failed, *eNet Management* will try to build temporary connections, for LAN, apply the default settings, for WLAN, associate to an opened wireless network (by *eNet Management* setting) and apply the default settings. If build temporary connections failed, *eNet Management* Network Advisor will guide user to solve the problem.

Wireless Auto Association

If WLAN connection disconnected, *eNet Management* will trigger *Wireless Auto Association* mechanism automatically. When wireless connection disconnected, *eNet Management* will re-create the wireless connection based on signal strength and speed of access points detected

| | | |
|---|----------------------------|----------------|
| Document Name: Empowering Network Management v2.6 Product External Spec. | Doc No. : PES-03142006 | Version: 1.18 |
| | Effective Date: 2007/08/30 | Page: 41 of 49 |

by *eNet Management*. However, *eNet Management* will try to connect to an opened wireless network if **Allow eNet Management to associate to an opened wireless network automatically** setting is checked. If all wireless networks detected by *eNet Management* failed, then Network Advisor of *eNet Management* will help user to solve the problem.

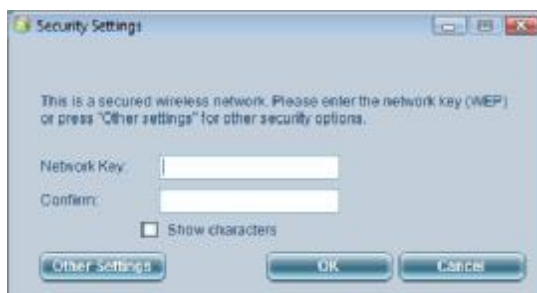
Associate to Wireless Networks Manually

User can manually associate to wireless networks from *eNet Management* main UI window or from *eNet Management*'s system tray or via Vista's wireless utility. *eNet* has the entry point for launching Vista's wireless utility.

If the access point which user is going to associate to is an opened SSID (without security settings) or associate to a managed access point (AP's settings was stored in *Vista's wireless utility*), then *eNet Management* will associate to the SSID immediately. Otherwise, the **Wireless configuration** page will show and user must configure the wireless security settings, so *eNet Management* can create wireless connection successfully. To know more about how to configure WLAN, please refer to the Configure Wireless section. If association is failed, then *eNet Management*'s Network Advisor will guide user to solve the problem.

Please note, associate to access point in this way will only create the temporary wireless connection. If user wants to manage the access points, however, then he/she should create a new profile or edit a profile to contain the access points. To know about how to create a new profile and edit a profile, please refer to Create Profile and Edit Profile section.

Configure Wireless



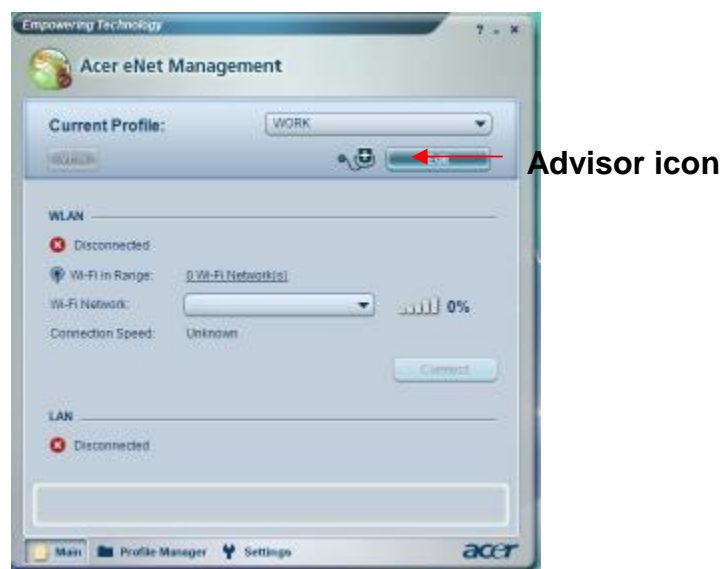
| | | |
|---|----------------------------|----------------|
| Document Name: Empowering Network Management v2.6 Product External Spec. | Doc No. : PES-03142006 | Version: 1.18 |
| | Effective Date: 2007/08/30 | Page: 42 of 49 |

To simplify the flow for connecting to secure AP, a simple **Wireless security** page is shown first. This page only supports WEP settings. If the security settings of selected access point are advanced security settings, user can click the **Other settings** button to launch the **Vista's Wireless Security Settings** page.

The figure shown above is the advanced wireless security settings. In this page, users can configure selected WLAN. The supported security settings are depended on the IHV.

Network Advisor

If there is any networking problem detected, then *eNet Management* main UI window will be shown as below:



User can diagnose LAN or WLAN problem by clicking the **Advisor** icon in the main UI window and the **Network Advisor** page will be shown below.

Network Advisor will describe diagnosed networking problems and provide the possible solutions and detected event to help user to solve the problem, including LAN and WLAN connections. For some cases, *eNet Management* will provide functions for repairing the network problem directly, such as turn on hardware or software wireless antenna, repair connection and launch IE program, etc. Therefore, user can fix the problem by one-click.

| | | |
|---|----------------------------|----------------|
| Document Name: Empowering Network Management v2.6 Product External Spec. | Doc No. : PES-03142006 | Version: 1.18 |
| | Effective Date: 2007/08/30 | Page: 43 of 49 |



Network Advisor page also provides diagnosing tools which help user to diagnose networking problems manually. To use the diagnosing tools, user can click the **Diagnostic Tools** button and the diagnosis window will be shown below:



In this page, user can perform **ipconfig**, **ping**, or **trace route** utilities. To perform **ping** and **trace route**, user should input target's IP address, host name, or URL. If **ipconfig** is selected, the **Target Name** field will be disabled. User can save the diagnosing results by clicking the **Save** button. User will be asked to input the file path of the log file and then a progressing. Network problems, from user's viewpoint, are classified into three segments:



1. *Local (NB) Side Problems*: Usually result from incorrect setups of network media or incorrect wireless security configurations.

| | | |
|---|----------------------------|----------------|
| Document Name: Empowering Network Management v2.6 Product External Spec. | Doc No. : PES-03142006 | Version: 1.18 |
| | Effective Date: 2007/08/30 | Page: 44 of 49 |

2. *Server Side Problems*: Usually result from incorrect TCP/IP settings.
3. *Internet Side Problems*: Invalid DNS

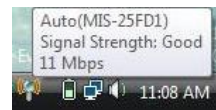
System Tray

Tray Icon Status:

| Icon Status | Description |
|---|--|
|  | Internet is connected. |
|  | Internet is disconnected. |
| Blinking | Profile switching or wireless network associating only |

User can move the mouse cursor over *eNet Management's* system tray icon and an information tip will pop up according to the icon status shown as below:

Internet Connected (through wireless connection):



Internet Disconnected:



Context Menu of *eNet Management* Tray:

User can launch *eNet Management* tray's context menu by moving mouse cursor over *eNet Management's* icon in system tray and right click mouse button. *eNet Management* tray's context menu is shown below:



Operations of menu items described below:

- I Stop Profile Switching: When *eNet Management* starts to switch profile, user can stop this process from here.



| | | |
|---|----------------------------|----------------|
| Document Name: Empowering Network Management v2.6 Product External Spec. | Doc No. : PES-03142006 | Version: 1.18 |
| | Effective Date: 2007/08/30 | Page: 45 of 49 |

- I Exit *eNet Management*: Terminated *eNet Management* program.
- I Open *eNet Management* main UI Window: Open *eNet Management* main UI window. User also can open *eNet Management* main program window by double clicking the left mouse button on *eNet Management*'s system tray icon.
- I Available WLANs: When this menu item is clicked, a sub-menu of existing wireless networks is shown, the last item is "More and Detail...", user can click some item to directly associate to an wireless network or click "More and Detail..." to launch Wireless Manager page. To know more about Wireless Manager, please refer to the Wireless Network Association section.
- I Switch Profile: When this item is clicked, a sub-menu of existing profiles will be shown. User can switch to a profile (please refer to Profile manual switching) here. Following figure illustrates the sub-menus of the Switch Profile menu item.



Setting



| | | |
|---|----------------------------|----------------|
| Document Name: Empowering Network Management v2.6 Product External Spec. | Doc No. : PES-03142006 | Version: 1.18 |
| | Effective Date: 2007/08/30 | Page: 46 of 49 |

There are two pages in the **Settings** page.

In **General** page, user can configure *eNet Management* as follows:

1. Launch *eNet Management* automatically when windows starts up: If checked, *eNet Management* will run automatically when windows starts up.
2. Switch Profile Automatically: If checked *eNet Management* will execute profile auto-switching. Please refer to Profile Auto Switching.
3. Allow *eNet Management* to associate to an opened wireless automatically: If checked, *eNet Management* will try to associate to an opened (unsafe) access point to create wireless connection during the profile auto-switching process. Please refer to Profile Auto Switching. The default value is enabled.
4. Network Information: If user clicks **View** button, the window will be shown. The content of this window is the summarized network information. Please see the Network Information section.

The **Network** page shows Network card settings and VPN. Network card settings is used for setting network card preference, including WLAN adapter and LAN adapter.

1. Wireless Network Card Setting: The setting window of the wireless adapter will be shown if user clicks the **Setting** button, this window is the same with the one from Device Manager.
2. Wired Network Card Setting: If user click the **Setting** button, the setting window of the wired adapter will be shown, this window is the same with the one from Device Manager.
3. VPN: user can configure VPN connections, including creation by *eNet Management* or Window. User can has several VPN connections but only one is active at a time. To activate the VPN connection, user just clicks the VPN button from main UI. Also note that the VPN settings are global, not per user.

| | | |
|---|----------------------------|----------------|
| Document Name: Empowering Network Management v2.6 Product External Spec. | Doc No. : PES-03142006 | Version: 1.18 |
| | Effective Date: 2007/08/30 | Page: 47 of 49 |



Network Information

In the **Network Information** page, user can see the summarized network information, including computer name, wireless adapter, wired adapter, information of connected access point, default printer, information of proxy settings and firewall settings, information of PPPoE connection and information of VPN connection, etc.

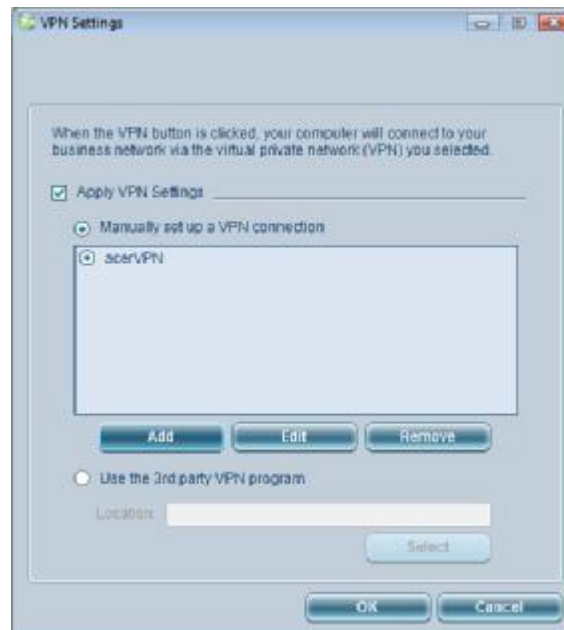


VPN

In **VPN** page, user can configure VPN connections, including creation by *eNet Management* or Window. To configure VPN, user can check the checkbox **Apply VPN Settings** (default is

| | | |
|---|----------------------------|----------------|
| Document Name: Empowering Network Management v2.6 Product External Spec. | Doc No. : PES-03142006 | Version: 1.18 |
| | Effective Date: 2007/08/30 | Page: 48 of 49 |

unchecked). There are two ways to configure VPN connection: **Manually Set up a VPN Connection** and **Use the 3rd program**.



To use **Manually Setup a VPN Connection**, user can select radio button **Manually Setup a VPN Connection**. In this case, *e/Net* will list existed VPN phonebook items of Windows as shown in above figure. User can select a desired VPN phonebook item or add a new one by clicking the **Add** button and the new VPN dialog will be displayed as below:



The Phonebook name, Server Address and Username fields are necessary. However, the Password field can be empty. This behavior is the same with Windows Vista. In **Edit** mode, the same page will be shown. The Password field will be clear if the Username field is empty. On the other hand, there are * characters in Password field even if user does not enter the password as creating VPN connection on condition that Username field is not empty.

| | | |
|---|----------------------------|----------------|
| Document Name: Empowering Network Management v2.6 Product External Spec. | Doc No. : PES-03142006 | Version: 1.18 |
| | Effective Date: 2007/08/30 | Page: 49 of 49 |

Aspire UI

Acer eNet Management will provide another UI style for Acer Aspire series platform. All UI will follow the style.

